

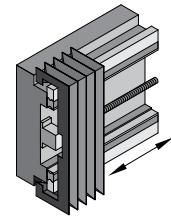
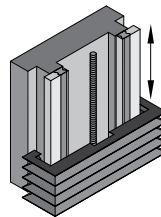
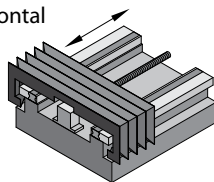
GORDILLO™ WAY COVER

Company Name _____ Address _____
 Contact _____ City _____ State/Prov. _____
 Quantity _____ Country _____ Zip/Postal Code _____
 Date Needed By _____ Telephone _____
 Email _____

Please provide as much information as possible, but let us know if you have questions you'd like to discuss. If units of measure are different than the options shown, please specify unit of measure.

1. Application Information

Equipment or part to be covered _____
 Machine Make _____ Machine Model _____ Part # (if replacement) _____
 Cover Orientation: Horizontal Vertical Cross Rail



2. Operation Information

Continuous (ambient) Temperature: _____ °F °C Intermittent Temperature Range: Min. _____ Max. _____ °F °C
 Frequency of Exposure: _____ Distance from Heat Source (if applicable)*: _____
 Maximum Travel Speed*: _____ Movements/Day _____ Acceleration*: _____
 *Please indicate unit of measurement for each value.

3. Environmental Information

Exposure: Weld Spatter Hot Chips/Swarf Metal Chips/Swarf Light Particles/Dust Water Coolant
 Cutting Fluid Petroleum/Hydrocarbons Oils (Non-Petroleum) Other _____
 Contaminant Exposure Level: Minimal Occasional Heavy
 Application Requirements Notes: _____

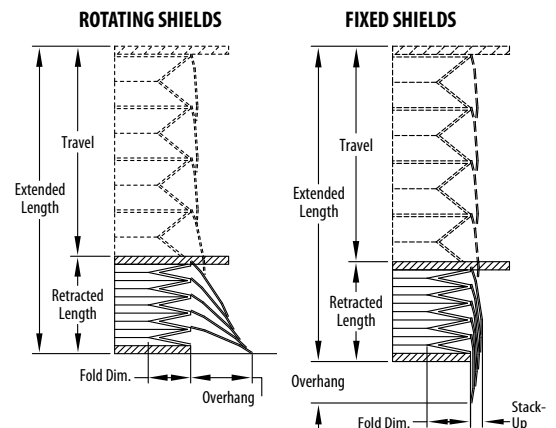
4. Extended/Retracted/Travel Requirements

Fold Height: _____ Overhang Available: _____ Retracted Length: _____ (travel/minimum/maximum factor + 0.30):
 Extended Length (travel + retracted length): _____ Shields: Rotating Fixed*
 *Stack-up space less than 1.25"? (see note) Yes No

FOLD HEIGHT	MINIMUM/MAXIMUM FACTOR	OVERHANG
0.75"	7:1	1.63" / 2.75"*
1"	10:1	2" / 3.5"*
1.25"	12:1	2.38" / 4.25"*
1.5"	15:1	5"
1.75"	17:1	3.25"
2"	20:1	3.5"

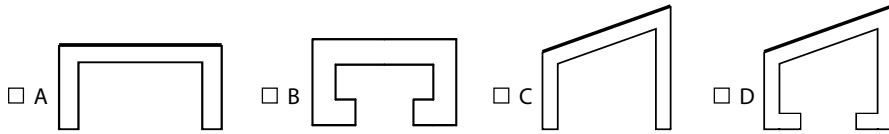
*Top plate mounted alternate convolutions.

Note: Stack-up varies from .375 to 1.00 as number of sections increases. Other fold heights are available. Contact Dynatect for assistance. Table is for reference only; actual extended/retracted ratios for individual applications will vary.



GORDILLO™ WAY COVER

5. External Profile Cover Shape

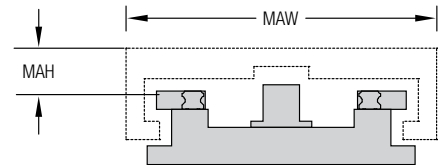


6. Maximum Allowable Cover Width and Height From Way

Dimensions specified in: in mm

MAH (Maximum Allowable Height From Way) Required: _____

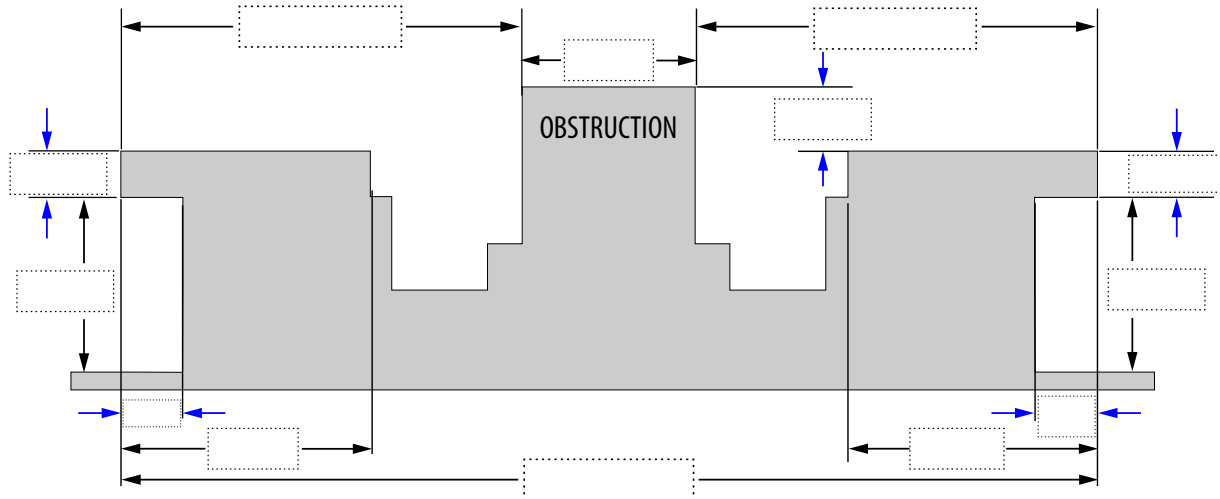
MAW (Maximum Allowable Cover Width) Required: _____



If you have a STEP file of your machine or way profile, please send that along with this form

7-A. Way Dimensions for Box/Bed Way Cover

If the way does not resemble the example shown, please send a sketch/drawing of your actual way dimensions.

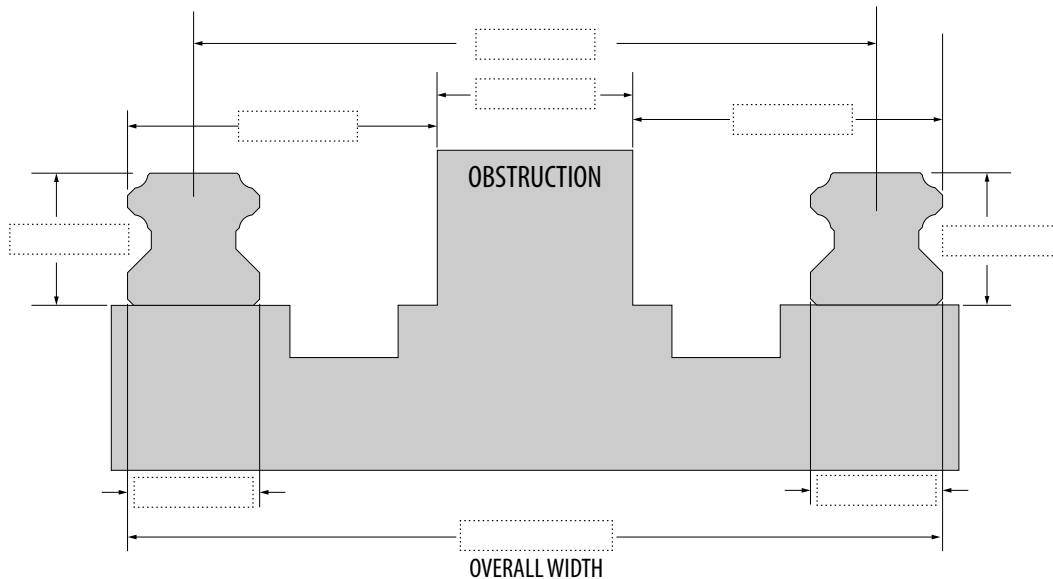


7-B. Way Dimensions for Linear Rail Cover

If the way does not resemble the way profiles shown below, please send a sketch/drawing of your actual way dimensions.

Covering: Dual Rail Single Rail (if single rail, only fill dimensions on one side of sketch)

Rail Model No. _____ Block Model No. _____ Rail Length _____



GORDILLO™ WAY COVER

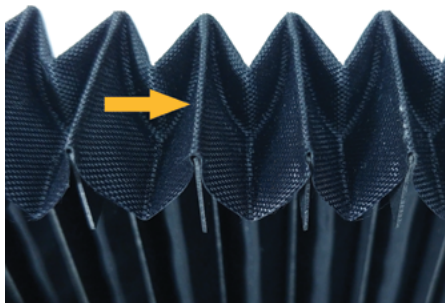
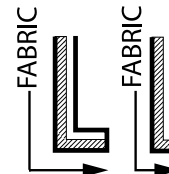
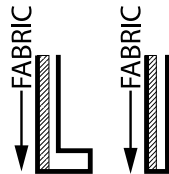
8. Legs/Sides Finishing

Note: For covers with stiffeners, legs can optionally be fabric-wrapped on the bottom and sides. Dynatect will design left/right sides (legs) according to cover orientation and way dimensions provided.

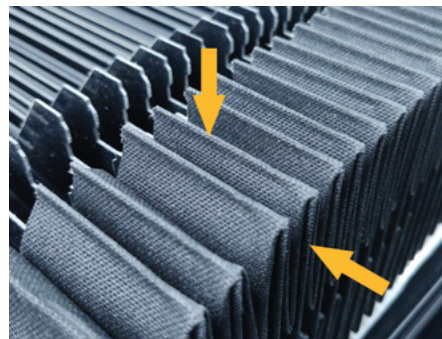
Does Cover Ride on Legs? Yes No

Fabric Wrapping on Legs? Fabric on Sides Only (Standard)

Wrap on Sides + Bottom (for exposure to contaminants or spray from sides or bottom of cover)



Fabric Wrapping on Sides Only
(view from underneath bellows)



Fabric Wrapping on Sides and Legs
(view from underneath bellows)

9. End Mounting Style & Options

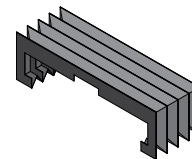
Dynatect can provide customized end plates with mounting holes specified per drawing. Orders placed without holes specified are shipped blank, without bolt holes.

End 1: Open Flange Closed Flange Plate Hook & Loop Fastener

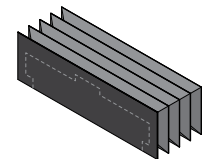
Other/Special (provide drawing)

Other/End 2: Open Flange Closed Flange Plate Hook & Loop Fastener

Other/Special (provide drawing)



OPEN FLANGE



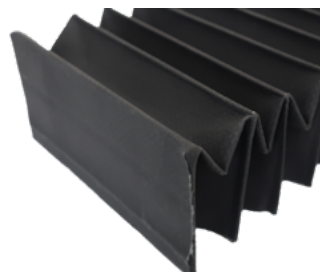
CLOSED FLANGE



Customized Mounting Plate with Extended Bracket or Flange



Hook & Loop Fastener



Closed Flange



Open Flange